

Greater San Antonio Quilt Guild, Inc.

Incorporated August 1980



www.sanantonioquilt.org
210-984-6149

June 8th Guild Meeting

9:00 am - Services
10:00 am - General
Business Meeting

at St. Francis Episcopal
Church, 4242 Bluemel
Road, San Antonio, TX
78242

June Program

Everything You Wanted
To Know and Maybe
Somethings You Didn't
Want To Know About
The 2019 Show.

Remember to
bring to the
meeting

- Name tag (wear it)
- Library books, & DVDs
- QPC projects
- Bright Hopes quilts
- Smiles for everyone

NEW GUILD MEETING LOCATION IN JUNE!!!!

**ST. FRANCIS EPISCOPAL CHURCH
LOCATED AT 4242 BLUEMEL ROAD,
SAN ANTONIO, TX 78242 (BEHIND USAA).**

Sewing machines were humming and hands were wielding fine needles. The workday was a success due to the more than 47 people who pitched in to help. Thanks go to everyone involved. Kudos!

This is the month we move to a new facility. St Francis Episcopal Church at 4242 Bluemel Road will be our home through November. There will be no December meeting, so in November we will be having a Harvest Dinner in lieu of a Christmas get together. It may not be as large a space as we'd like but they have welcomed us and we will make it work. Please don't complain! The search is still on with 78 places contacted and rejected so far.

The program this month is all about the Show in September. Get those entry forms in before the price rise if you can. Be sure to pick up tickets to sell and save up for shopping with some fantastic vendors. The excitement is building!

Keep on stitching - - - Mary



WELCOME NEW
MEMBERS!

Shayla Zucker,
Julie Melchor
Isabella Ariza

Door Prize
Winners!

Cathy Forci
Brown

Mary Ruth
Flores



PIPPS
Winner
~
Barbara
Sumlin



Congrats to Cindy King, our winner of the Golden Carrot award. We appreciate her, and all of you that have supported us through the years. Please remember to turn in your completed blocks at the next Guild meeting, and enter the drawing. Thanks!



NEWSLETTER INPUT

DEADLINE is Midnight the Monday after Guild meeting. E-mail: quiltnews@sanantonioquilt.org

NEWSLETTER ADVERTISING

	Monthly	Yearly
Full page ad	\$60.00	\$660
1/2 page ad (horizontal - 7 x 4 3/4 vertical - 3 3/8 x 9 1/2)	\$30.00	\$330
1/4 page ad	\$15.00	\$165
Business card (2 x 3.5)	\$10.00	\$110

PROGRAMS

June. Program will be Quilt Show 2019, Everything You Wanted To Know and Maybe Somethings You Didn't Want To Know About The 2019 Show.

PIPPS #6. After the June meeting PIPPS will take a break till after the show.

July. Program will be Teresa Duryea Wong, author of the book, American Cotton: Farm to Quilt. This book tells of the story of the American cotton farmer and his cotton turned into fabric.

August. Guild member and AQS Certified Quilt Appraiser, Rebecca Cook, will present Let's Talk about Quilts and Appraisals. There will be 5 appraisal appointments available in the afternoon.

If you want to sign up for a class and can't make the meeting, contact Janet Miller, 3rd VP for Programs, 210 492-7684 or jjmiller@satx.rr.com.

Ethel Howey Grant Applications

Deadline August 1st

See Karen Lambdin for info



Patterns for bibs to make for patients at the Audie Murphy VA Hospital are available on a check out and return basis.

6.19 Pieces of the Past, 110: Tartan by Ellen Hernandez



American textile archeologist Elizabeth Barber, author of *“The Mummies of Urumchi,”* is credited with discovering the oldest known evidence of tartan plaids. Preserved bodies from about 2,000 BC found in tombs in northwest China appear to be tall Caucasians with blond and red hair, the men having heavy, curly beards and the women long braids. Surprisingly, large amounts of brightly colored textiles were retrieved from the burial sites including a red twill tunic and tartan leggings. These textiles are similar to plaid twill

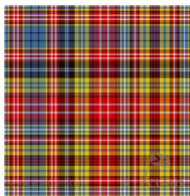
woven by Celt ancestors found in Bronze Age salt mines in the Alps near Salzburg, Austria. Named the Hallstatt tartans, their colors of blue, black, and yellow date to 1200 – 400 BC. The Celts influence in 300 BC is known to have ranged from Ireland south to Spain, across to Italy and the central plains of Turkey. The discovery of the Urumchi mummies and textiles suggest the Celts settled in Asia as far east as Tibet.



Highlander King James V is recorded to have worn tartan in 1538. Tartan kilts and trews (trousers) were the everyday wear of the late seventeenth century Scottish Highlander. Women wore a tonnag, a small tartan type shawl or an arisaid, a tartan length draped like a dress. The dyes used to color the wool distinguished a particular region based on the available sources in that area such as particular berries, roots, and plants. The woven patterns were not named or assigned to a clan at first. In 1746, the British government prohibited the wearing of tartan to suppress the organization of rebelling Scots. But Scottish weavers produced large quantities of tartan for the Highlander troops, identifying the weave first by numbers, and then by names of clans and towns. *William Wilson & Sons Pattern Book of 1819* displays 250 different tartans. Today there are over 7,000 unique tartans recorded.



The Balmoral tartan was designed by Queen Victoria’s husband, Prince Albert. It can only be worn by the Royal Family. It is said that the Queen favored the wearing of a big pin on kilts to prevent it from flapping open and revealing too much.



Tartan vs plaid: a tartan’s horizontal pattern is the same as the vertical and threads are two over two or twill; plaids are usually not the same in both directions. Most tartan patterns result in squares of color, but some of the older patterns have more rectangles. The simplest pattern is Rob Roy with red and black squares. The most

complicated is Ogilvie with 96 color changes. While wool has been the most common fabric for tartan, today they are made with cotton, linen, and polyesters.



In 2004 a designer registered the Presley of Lonmay tartan honoring Elvis’ Scottish roots. Astronaut Alan Bean took a piece of his family tartan, the MacBean, on his Intrepid trip to the moon in 1969. There is a Scottish Tartans Museum and Heritage Center in Franklin, NC that displays vintage tartans and kilts.



National Tartan Day, April 6th, was established by Congress in 1997 to recognize Americans with Scottish descent. The Declaration of Independence was modeled after the Scottish Declaration of Arbroath of 1320. Almost half of the signers of the US Declaration were Scottish descent, and nine of the original thirteen states had Scottish governors.



Suzie Quilts
at
Valley Ranch
Retreat & Event Center

105 Mockingbird Lane
Camp Wood, Texas 78833
in the beautiful Texas Hill Country

www.SuzieQQuilts.com www.ValleyRanchRetreat.com
830-597-6310 830-597-3445
Sue@SuzieQQuilts.com info@ValleyRanchRetreat.com

Now to Him Who is able to do far more abundantly beyond all that we ask or think...

QUILT SHOW 2019

It is just a few months away for our 2019 show! I am accepting items to be sold in the boutique at every meeting up to the show. For newer members, the Guild has a boutique at the show where your items can be sold. Items must be sewing or quilting related. The guild will collect a 20% commission off the sales price. The sales price placed on the item must include this 20% as well as about 8% for retail sales tax. Keep your prices in increments of .25¢ so I do not have to have so much change on hand. One-dollar increments are even better!!!

I will be setting up the boutique the Wednesday and Thursday before the show and can accept items at the event center. I can also accept your items during the show, as time allows, but whichever way you get your items to me, an inventory sheet must be filled out and every item must be on the sheet. Every item must be tagged with the price and your unique inventory code.

I have inventory sheets you can fill out, or you can turn in your own. If you do your own, it must include your contact info (name, address, email, phone number), a unique inventory control number, and the item number, description and price of each item. By submitting either form, you are agreeing to work one 2-hour session in the boutique and myself, the guild, or the event center cannot be held liable for any loss or damage to your items. Your items must be self-insured. Your unique inventory code can be your initials, a series of 3-4 numbers or a combination of both. That is how we will identify you when an item is sold to be sure you are paid! Doing your own spreadsheet and creating your tags with mail merge is the way to go!!!

I will accept one or one hundred items; completed or assembled in a bag as a kit, bundles of fabric as a theme or a grouping. You can even put in fat quarters, but remember; every item you want in the boutique must be on an inventory sheet and must be tagged. I will have inventory forms at any meeting or email me to send you an excel spreadsheet. The tags can be of any form or fashion. Each tag must have your unique inventory code, name of the item, item number and the sales price. If you have room on the tag, put your name on it, just as an extra way to give you credit! Remember, the sales price will have about 28% taken out.

Books or magazines will not be accepted. We cannot take any items that are not tagged. It is the only way we can control the inventory and give you credit when something is sold. You are responsible for picking up any unsold items at the end of the show.

Janet Miller, 2019 Quilt Show Chairperson

AMERICAN FIBER PRODUCTS

has new owners, and the same **QUALITY BATTING** made in Texas!

WHOLESALE & RETAIL

Owners **Sherry and David Mark** believe strongly in offering our customers:

- *Superb customer service*
- *Fair and competitive pricing*
- *Quality products*
- *Personal relationships*

American Fiber Products and its parent company, **Loft Supply**, are operated from The Woodlands, Texas

email: Sherry@LoftSupply.com
phone: 832.675.1143

AmericanQuiltBatting.com LoftSupply.com

All guild members may advertise in the newsletter one free business card size each year. Must be quilt related.

**GSAQG Board Meeting Minutes
May 6, 2019**

Mary McCarthy, President, called the meeting to order at 3:00 p.m. at Igo Library. Present were board members Dea Jae Shore, Janice Schwab, Karen Nanos, Elaine Staller, Janet Miller, Leti Zavala, Gail Clover and guest, Barbara Sumlin.

President – Mary McCarthy

1. Reminded board that she will not be present for the board and general meeting in June. Dea Jae Shore will assume duties.
2. Rosebuds to members of the QPFC: Ida Blakenship Kujawski (Chair), Jean Hardies, Jeanette Jay, Suellis Moore and Sandra Lowell.
3. Updates needed on guild website e.g. program calendar to reflect change regarding Nov/Dec meetings. Dea Jae will check on this. Bees still list Kitty Janiga as contact. Auction assistants should be up to date. A volunteer co-chair would be desirable.
4. Guest, Barbara Sumlin, presented information about organizing a grant proposal. Grants provide funding for supplemental activities and support. The guild would be required to develop a support system for sustainability. Typically, rental fees are not allowable expenses under grant funding. A grant would require a huge administrative effort from the guild. In response to the grant information, the board will continue to explore other options.
5. The board approved the April minutes.

President Pro Tem - Dea Jae Shore ~ Nothing to report.

Secretary - Janice Schwab

1. Presented a continued list of venue searches.

Treasurer - Karen Nanos

1. Current total balance is \$71,632.65.
2. Provided information regarding the guild's bank balance in the May newsletter.
3. Dea Jae will review the cash balances.

1st VP for Special Events – Elaine Staller

1. The June 9-14 Summer Retreat organizer, Sharon Ross, reports that all is going well. Attendees who have not paid their balance must do so at the May meeting or submit payments by mail.
2. Quilt Show, September 20-21- Chairperson Janet Miller reports that she has 40 vendors and all sponsorships are filled. She and Janice Frankenberger traveled to Bandera, Medina, Kerrville to distribute rack cards. They will make another trip in May.

2nd VP for Information – Ina Ramirez ~ Absent

1. Dea Jae Shore reported on the status of the Photo Bucket and is working to create a workable size for pictures to be placed on a flash drive.

3rd VP for Programs – Janet Miller

1. Updated May program. Reminder that the Friday, May 10 class, has 10 participants and will be held at the Thousand Oaks Library. Saturday May 11, will be a workday. 34 workers have signed up to help.
2. June program will present Quilt Show 2019 information and volunteer sign up.
3. There will be PIPPS in June, discontinue through September and resume in October.
4. July features Teresa Wong presenting "American Cotton; Farm to Quilt."

4th VP for Services – Leti Zavala ~ Nothing to report

5th VP for Community Outreach – Gail Clover

1. Bright Hopes – The board approved quilt donations to the geriatric unit at SASH, Roy Maas, and St. PJ.
2. Gail's correct email address is: Gail.Clover@aol.com

Parliamentarian – Sylvia Jolet

1. Reported that she is searching for volunteers to assume the duties of guild Treasurer and 1st VP of Special Events whose terms end in December.

New Business- none

Old Business – none

Meeting adjourned at 4:30.

Minutes submitted by Janice Schwab, Secretary.

SILENT AUCTION DONATIONS WANTED!

We have four more months until the quilt show and our collection of donated items is small. The silent auction still needs a lot more items. We are now accepting showing notions, fat quarters, yardage, patterns, kits, rulers, along with small quilts. (ALL DONATIONS ARE GRATEFULLY APPRECIATED).

Suellis Moore, Silent Auction Chairman

**GSAQG General Meeting Minutes
May 11, 2019**

President – Mary McCarthy

1. Called the meeting to order at 10:00 a.m. at the Coker UMC gym.
2. A Calico Rosebud was presented to Donna Anderson for her participation on the Community Education Committee. Calico Rosebuds were also given to the Quilt Project Finishing Committee chair, Ida Kujawski and her committee members Jean Hardies, Jeanette Jay, Suellis Moore, Sandra Lowell, and Dea Jae Shore.
3. Reminder that the June meeting will be held at St Francis Episcopal Church, 4242 Bluemel Road, 78242. There will be a map on the GSAQG web page.

President Pro Tem - Dea Jae Shore ~ Nothing to report.**Secretary - Janice Schwab**

1. Conducting an ongoing search for a home facility. Have contacted over 75 places.

Treasurer - Karen Nanos

1. Current total balance is \$71,358.99.

1st VP for Special Events – Elaine Staller

1. Reminded the guild that she needs a replacement for her position for next year. If interested, please contact her for more information.
2. Summer Retreat – Chair, Sharon Ross, reported that participants will leave immediately after the June guild meeting. Fat quarter games and other activities will be part of the fun. Unloading assistance will be available at the retreat at 3:00 p.m.
3. Quilt Show 2019 – Chair Janet Miller
 - a. Silent auction, Sandra Lowell- needs small items (table runners, wall hangings, place mats, etc.) for the auction. All proceeds from auction go directly to the guild.
 - b. Quilt Entries, Holly Nelson – entry forms are available on the guild web site and in the newsletter. Entry form must be accompanied by a photo of the quilt. If the quilt is not completed, a photo of the pattern and fabrics can be submitted.
 - c. Janet appealed to all guild members to help to sell the raffle tickets for the show quilt.
 - d. Boutique, Jeanette Jay- reminded participants that they must provide an inventory sheet of the items they wish to sell. They must also sign up to work a two-hour shift in the boutique booth.

2nd VP for Information – Ina Ramirez

1. Reminder that any newsletter concerns should be addressed to Ina.

3rd VP for Programs – Janet Miller

1. Saturday is a guild workday. Members will help the guild committees complete projects.
2. June program will be “Everything You Wanted to Know About the Quilt Show.”
3. June is the final PIPPS until after the quilt show.
4. July program features Teresa Wong presenting “American Cotton: Farm to Quilt.”
5. August program features a lecture from Rebecca Cook, “What’s in an Appraisal.”

4th VP for Services – Leti Zavala ~ Nothing to report.**5th VP for Community Outreach – Gail Clover**

1. Applauded Dea Jae Shore for her well-organized and informative Friday class teaching machine quilting using a ruler foot and templates.
2. Quilting Angels, Chair Barbara Sumlin
 - a. Showed five quilts completed by her committee that are being donated to Audie Murphy.
 - b. Requested a volunteer to quilt the KLRN auction quilt.
3. Bright Hopes, Linda Nash – reported her committee has nine quilts that need labels and ties for today’s workday.
4. QPC, Chair Barb Shrout
 - a. Invited members to join her committee which meets the first Tuesday of the month at Our Lady of the Lake University from 9:30-11:30.
 - b. Awarded the Golden Carrot to Cindy King.

Parliamentarian – Sylvia Jolet

1. Reported that a volunteer for next year’s treasurer position has been found.

New Business- none

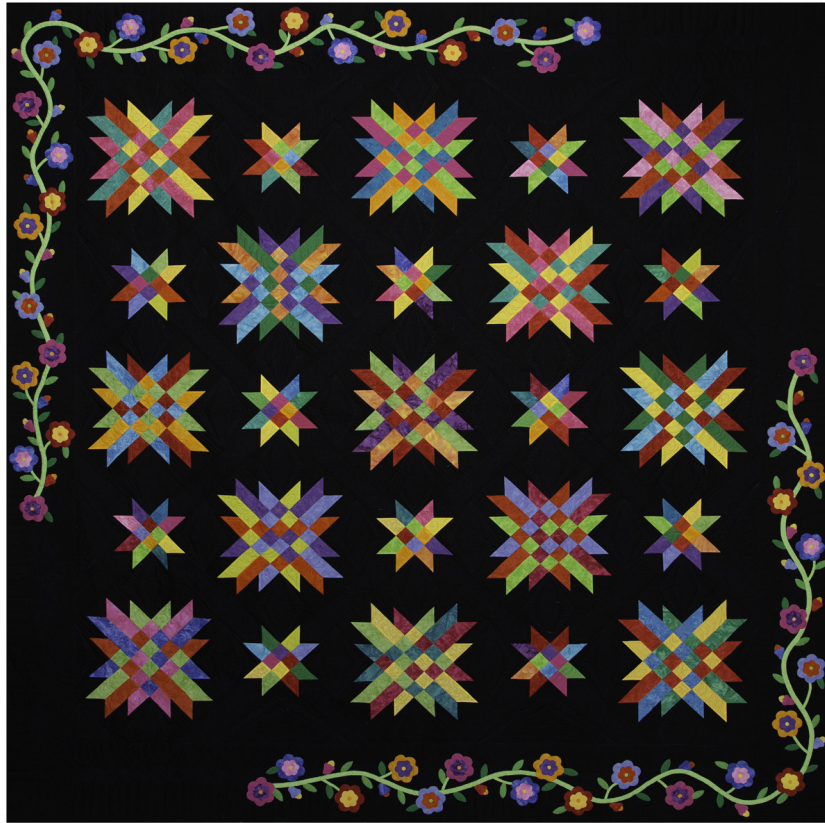
Old Business – none

136 members present, 6 guests, \$2 collected for nametag fines.

3 new members: Shayla Zucker, Julie Melchor, Isabella Ariza.

Meeting adjourned at 10:26 a.m. Minutes submitted by Janice Schwab, Secretary.

2019 Raffle Quilt



2019 Quilt Show

We have 105 days until the 2019 Quilt Show, Color The World With Quilts. The show is September 20 and 21, at the SA Event Center, 410 and Marbach. There are 12 FQ of challenge fabric is still available, buy a fat quarter or two for \$5.00 ea. from Candy Reinhard at the Guild meeting.

Stop by the Show table to pick up sale ticket packets and rack cards. We will need to get the raffle quilt to as many venues as possible, if you have a club, group or job that will allow the quilt to be displayed PLEASE let me know. Hopefully, you can sell tickets but even displaying the quilt and handing out bookmarkers will help get the word out about the show.

Beverly Taft will start the volunteer sign-up at the June meeting. PLEASE, PLEASE sign-up for 2-3 shifts. Only you can make this show a success. You have until the June Guild meeting to take advantage of the \$7.00 entry fee. After the June Guild meeting the fee goes up to \$10.00, so on your four entries you save \$12.00 by being an early bird.

Janet Miller, 2019 Quilt Show Chair
210 492-7684, jjmiller@satx.rr.com

DUE by July 20, 2019
 o 1 Self Addressed Stamped Envelope
 o Entry form & color photo for *each* entry
 o Appropriate fees

GSAQG Judged Show
Color the World with Quilts
 September 20 and 21, 2019

OFFICIAL USE ONLY
 Quilt # _____

Entry Form

About You

Name _____
 Address _____
 City _____ State _____ Zip _____
 Telephone (H) _____ Cell _____
 e-mail _____
 GSAQG Member? Yes No

If you are not currently a member, but wish to be: Check Yes above and include your dues payment of \$24 below.
 Membership will expire December 2020.

About the Quilt

Name _____
 Size _____ inches Vertical (length) _____ inches Horizontal (width)
 Category # (choose only one) _____ Year completed _____
 * For Group quilts, please print name of group and the names of its members on the back of the picture.
 Constructed by: Self Other: _____
 Pattern/Design Source credit: Original work Other: _____
 Quilted by: Self Other: _____
 Quilting technique: Hand Machine, Stationary
 Machine, Track-Mounted Computer aided
 Is this quilt for Sale? No Yes, asking \$ _____
 (20% will be deducted for guild expenses.)
 Do you wish to have this quilt appraised? No Yes
 (If yes, include \$55 appraisal fee for each quilt to be appraised.)

Placement Categories	
100	Applique, Large
200	Applique, Small
300	Pieced, Large
400	Pieced, Small
500	Mixed Technique, Large
600	Mixed Technique, Small
700	Scrap Quilts
800	Hand Quilted
900	Modern Quilts
1000	Group Quilts
1100	Miniatures
1200	Art Quilts/Fiber Arts
1300	Embroidered Quilts
1400	Kit/Block of the Month
1500	First Quilt
1600	Juniors
1700	Wearable, Home and Personal Accessories
1800	Challenge
1900	Other/Miscellaneous

Quilt's Story (for the gallery card). Please limit to 50 words or less.

Raffle Tickets: I wish to purchase:

6 for \$5 12 for \$10 24 for \$20

Hold Harmless Agreement.

I understand that all entries must be available for judging and display from Tuesday September 17th through Saturday September 21st, 2019. I agree to allow the GSAQG to photograph my entry for files, publicity and promotional purposes. I understand that every effort will be made to protect my entry. Neither the chairpersons, GSAQG, Inc., nor the San Antonio Event Center can be held liable for loss or damage to the entry.

Your Signature _____ **Date** _____

Amount Enclosed (Make checks payable to *Greater San Antonio Quilt Guild*)

\$7, \$10 or \$15 Entry _____ + \$55/Appraisal _____ + Raffle Tickets _____ + \$24 Dues _____ = **TOTAL \$** _____

*Greater San Antonio Quilt Show 2019**Entry Instructions**Entries due No Later Than: July 20, 2019*

- ♦ Please print in ink.
- ♦ Copies for multiple entries are acceptable.
- ♦ A maximum of 4 entries will be accepted per person.
- ♦ One person only signs as entrant. (One ribbon per entrant.)

Forms must be completely filled out, signed and accompanied by:

- ♦ **Entry fee is \$7 per entry for GSAQG guild members if submitted on or before June 8, 2019 (the June guild meeting), and \$10 if submitted after June 8th. Entry fee for non-members is \$15 per entry. Checks should be made out to GSAQG.**
Entry fee is non-refundable if withdrawn after the deadline (July 20, 2019).
One check may cover multiple entries.
No entry fee for Category 1800 -- Challenge.
Include appraisal fees, raffle ticket purchases and membership, if applicable.
- ♦ A **color photograph** of the entry.
Work in progress photos and computer printouts are acceptable.
Write your name and quilt title on the back of the photograph.
For Group quilts, print name of group and the names of its members on the back of the picture.
Do not staple or tape photo to the entry form
- ♦ Legal size (4" x 9 1/2") **Self Addressed Stamped Envelope**.
A single envelope may be included for multiple entries.

Submit your complete entry package:

- ♦ At **monthly guild meetings** or, by mail, to:
- ♦ GSAQG Show Entry
c/o Holly Nelson
296 Settlers Way
Comfort, TX 78013-5522

Appraisals: Rebecca Cook, a certified quilt appraiser, will be conducting appraisals for a fee throughout the quilt show. This service is available by appointment only and has sold out in past shows. If you would like to have your quilt appraised, you may "book" your slot now now and guarantee that your quilt will get the professional appraisal it deserves. (\$55/quilt.)

2019 Raffle Quilt: "Color The World With Quilts"

- ♦ Thanks to Cindy Carter, www.carterquilter.wordpress.com, for permission to use her Delectable Stars pattern. Blocks were made by guild members. Border flowers are machine raw edge applique by Janet Miller. Quilting by guild member, Vonnie Maglinte.
- ♦ Tickets (\$1 each, or 6 for \$5) may be purchased at the time of your quilt entry.
- ♦ The drawing will be held Saturday, September 21st, 2019, during the quilt show.

*** For Show Rules and a complete description of categories, please visit our website at:
<http://www.sanantonioquilt.org>

Greater San Antonio Quilt Guild Judged Show
 “Color The World With Quilts”
 September 20 and 21, 2019
Entry Rules

General Information

Entry forms and fees will be accepted at monthly guild meetings or by mail to:

GSAQG Show Entry, c/o Holly Nelson, 296 Settlers Way, Comfort, TX 78013-5522. Entries are due no later than July 20, 2019.

Entry packages must include the following:

- Completed entry form, printed in ink, one form for each entry.
 - Copied forms are acceptable.
 - A maximum of four (4) entries will be accepted per person, excluding the Challenge category.
 - More than one person may be listed as maker, but one person must sign the form as designated entrant. Three or more persons make a group entry.
- Entry fee is \$7 per entry for GSAQG guild members if submitted on or before June 8, 2019 (the June guild meeting), and \$10 if submitted after June 8th. Entry fee for non-members is \$15 per entry.
 - Entry fee is non-refundable if withdrawn after the deadline (July 20, 2019).
 - One check may cover multiple entries.
 - No fee for entries in the Challenge category.
 - Include membership dues, appraisal fee, and raffle ticket purchases, if applicable.
- A color photograph of the entry, for identification.
 - Work in progress photos and computer printouts are acceptable. Write your name and quilt title on the back of the photograph.
 - Do not staple or tape photo to the entry form.
- A Self-Addressed Stamped Envelope, legal size (4" x 9 1/2"). A single envelope may be included for multiple entries.

Entries are not limited to members of the Greater San Antonio Quilt Guild.

We will accept the first 300 quilts. Additional pieces may be accepted as space allows. Entries will be accepted in order received.

Quilt Preparation

- All quilt entries must have a 4" sleeve stitched securely to the quilt. Place the top edge of the sleeve no more than 90" from the bottom of the quilt. If the quilt is shorter than 90", place the sleeve at the top of the quilt. Wall hangings less than 30" wide will require a 2" sleeve across the top of the quilt. Quilts will not be displayed without a sleeve.
- The quilt must be labeled on back of the quilt, and must include the name of the quilt and the quilt maker(s). The maker's name on the label must be covered during the judging portion of the show. All garments, personal and home accessories and miniatures must be labeled.
- No rigid frames, mounting devices or special lighting may accompany the quilt.
- Quilts entered must have been completed after January 1st, 2016.
- Items previously judged in a GSAQG show will not be accepted.

The Quilt Show

- All entries must be available for judging and display from Tuesday, September 17th through Saturday, September 21st. No quilts will be removed prior to 6:00 pm, September 21st, 2019.
- Delivery point: San Antonio Event Center, Tuesday, September 17th, from 7:00AM -11:00 AM. It is the responsibility of the entrants to ensure their entries arrive by the specified time.
- Mailed entries: Quilts that will be mailed to the show must arrive no later than Friday, September 13th. Also:
 - They must be sent in a box sturdy enough to be used to return the quilt.
 - A pre-paid mailing label must be included with the quilt for its return.
 - Mail or ship the quilt to: Jen Eskridge, 10632 Black Horse, Helotes, TX 78023
 - Questions may be made to Jen Eskridge, 316-651-7313, reannalilydesigns@gmail.com
- Entrants are responsible for insuring their entries. While there will be security on site Wednesday evening thru Saturday at 6 PM, and every effort will be made to assure your entry's safety, neither the Chairpersons; GSAQG, Inc.; nor San Antonio Event Center management can be held liable for loss or damage to your entry.
- The judged show committee reserves the right to re-categorize the entry, and reserves the right to jury quilt entries.

Awards

- First, second, third and honorable mention awards (at the judges' discretion) will be given in assigned categories. All

awards may not be given in each category, dependent on the quality of the entries.

- Special awards may include: Best of Show, Viewers' Choice, Judges' Recognition, Best Use of Color, Best Traditional Quilt, Best Hand Quilting, Best Machine (Stationary) Quilting, Best Machine (Track mounted) Quilting, and Best Machine (Computer aided) Quilting.
- Cash prizes will be given as follows: Best of Show (\$500), Best Overall Quilting (\$300), Best Use of Color (\$300), Best Traditional Quilt (\$200) and First Place in each category (\$50). Best Overall Quilting will be selected by the judges from the 4 separate quilting categories.
- Viewers' Choice will receive a gift basket of vendor products.

Categories Defined

- To reflect the dynamic nature of the quilter's art, our show focuses on overall construction and design and less on the mechanics of production. Accordingly, there is no category differentiating professionally quilted work from others. To quote one of our past judges, "Well done is well done."
- Stationary machine: A quilt that is moved by hand under a sewing machine to do the quilting.
- Track mounted: The machine is hand guided over the surface of the quilt to do the quilting.
- Computer aided: If any part of the quilt is stitched by a pre-programed software program in which the machine does the stitching. In the judging of these awards, both stitch production and quilting design will be considered.
- Hand quilted: The quilt is quilted entirely by hand.
- Quilters will be acknowledged on the gallery cards and in the program, but ribbons will be awarded only to the entrant, one per quilt, except where Special Awards Ribbons are given.
- Individual awards will be given for excellence in Hand Quilting, Machine Quilting (Stationary), Machine Quilting (Track mounted) and Machine Quilting (Computer aided). Those will be awarded to the person who has done the quilting (not necessarily to the person who made the quilt top).

100 Appliqué Quilt, Large

1. Quilt must be at least 72" on the longest side.
2. Top construction is predominantly appliqué.
3. The quilt must be the work of one or two people.

200 Appliqué Quilt, Small

1. Quilt must be less than 72" on the longest side.
2. Construction technique is predominantly appliqué.
3. The quilt must be the work of one or two people.

300 Pieced Quilt, Large

1. Quilt must be at least 72" on the longest side.
2. Top construction is predominantly pieced.
3. The quilt must be the work of one or two people.

400 Pieced Quilt, Small

1. Quilt must be less than 72" on the longest side.
2. Construction technique is predominantly pieced.
3. The quilt must be the work of one or two people.

500 Mixed Technique, Large

1. Quilt must be at least 72" on the longest side.
2. Top must contain a balance of two construction techniques (piecing & appliqué).
3. The quilt must be the work of one or two people.

600 Mixed Technique, Small

1. Quilt must be less than 72" on the longest side.
2. Top must contain a balance of two construction techniques (piecing & appliqué).
3. The quilt must be the work of one or two people.

700 Scrap Quilts

1. Any construction technique is acceptable.
2. Any size is acceptable.
3. Any type of quilting is acceptable.
4. The top must contain at least 60 different fabrics.

800 Hand Quilted

1. Any construction technique is acceptable.
2. Any size is acceptable.
3. The top must have been quilted entirely by hand.
4. The quilt may be the work of any number of people.

900 Modern Quilts

1. Any construction technique is acceptable.

2. Any size is acceptable.
3. The quilt is primarily minimalistic with expansive negative space.

1000 Group Quilt

1. Any construction technique is acceptable.
2. Any size is acceptable.
3. Three or more people must have participated in the construction of the quilt top.

1100 Miniatures

1. Piece must be 25" or less on the longest side. (Max 25" x 25")
2. Entries must be in a scale proportioned to the size of a whole quilt.
3. Any quilting technique is acceptable.
4. Miniature novelty techniques are accepted, including: crazy quilting, yo-yos, etc.
5. The quilt may be the work of one or two people.

1200 Art Quilts / Fiber Arts

1. The piece must show artistic/studio design concepts, with the emphasis on line, color and design. The category features abstract and cutting-edge works.
2. The piece is the original work of the maker.
3. Any construction, quilting and/or surface techniques are acceptable.
4. The quilt must be the work of one or two people.

1300 Embroidered Quilts

1. Quilts in which the blocks feature embroidered designs, including redwork/blue work and computer guided embroidered designs.
2. Hand or machine embroidery is acceptable.
3. Any size is acceptable.

1400 Kits/ Block of the Month

1. Any quilt made from a kit (purchased pattern with pre-selected fabrics) or Block of the Month pattern (from shops, mail order or magazine, etc.), including patterns with pre-selected/pre-fused fabrics.
2. Any size is acceptable.
3. The quilt must be the work of one or two people.

1500 First Quilt

1. The entry must be the first quilt entered in a formal quilt show.
2. Any size or construction technique is acceptable.
3. The quilt must be the work of one or two people.

1600 Juniors

1. The quilt must be made by child under the age of 18.
2. Any construction or quilting technique is acceptable.
3. Limited adult help is acceptable.

1700 Wearable, Home and Personal Accessories

1. Can be garment, pillow, purse, tote or table runner, up to 24" x 48"
2. Some quilting (machine or hand) is preferred but not mandatory.
3. Awards will be weighted in design and creativity, as will construction and finishing techniques.

1800 Challenge

1. Fabric must be used in the body of the quilt, easily recognizable within the constructed piece, and NOT just used as border or binding.
2. Size: 200 inches maximum perimeter measurement.
3. The piece must be a finished quilt and be the work of an individual.
4. Any technique or combination of techniques is acceptable.

1900 Other/Miscellaneous

Quilts that do not fit criteria of other categories: whole cloth, yo-yos, crazy quilts, painted/colored work that does not fit Art category rules, etc.

**GREATER SAN ANTONIO QUILT GUILD, INC.
ETHEL Y. HOWEY GRANT PROGRAM**

MISSION

The Greater San Antonio Quilt Guild (GSAQG) has established a grant program in honor of a loved and esteemed founding member, Ethel Y. Howey, whose accomplishments and influence extended into the international quilt world. The grant is to encourage the pursuit of education in the study of quilt making and to recognize the importance of quilting in today's society as an art form, as an instrument of healing, as part of our legacy, and as a common thread which binds all in friendship.

PURPOSE

The purpose of the grant program is to fund projects that will have long term impact on preserving the heritage and further the art of quilt making. The grant may be used to cover expenses such as fees (including conferences, workshops, etc.), travel, lodging, meals, materials and books. The grant(s) will be awarded annually, not to exceed \$1,000. The Grant Committee may divide the monies between more than one recipient. The GSAQG is not obligated to award the entire \$1,000 or any part thereof, if the quality of the proposals does not merit it.

ELIGIBILITY

- Applicant must be an active GSAQG member in good standing for the previous **two (2) years** immediately preceding the grant deadline.
- An applicant must show evidence of an interest in continuing to improve and innovate in the field of quilt design, construction, history or technique.
- Financial need will NOT be a criteria for selection.
- Grant recipients are ineligible to reapply for grants for three years. Grant committee members are ineligible for grants while serving on the committee.

PROCEDURES AND DEADLINES

- Applications must be submitted **on or before August 1** (current year), and the grant will be awarded at the following January Guild meeting.
- If the recipient fails to fulfill the requirements or is unable to attend the proposed project or program, the grant money must be returned within **three (3) months** of the cancellation, or on a time-line agreed to by the committee and the applicant. If an alternate applicant is available, the money may be transferred to the alternate with approval of the committee.
- Recipients must be willing and able to share with GSAQG the new skills, techniques, or information gained. This may be in the form of a presentation, a workshop or other process that disseminates the information to the members in **the year following receipt of the grant**. Scheduling must be coordinated with the 1st Vice President for Programs.
- If a workshop or program is being presented, **at a minimum of (3) three months before** the scheduled Guild workshop or program, a lesson plan and class sample will be presented to the Ethel Howey Chairperson, the 1st Vice President for Programs and one Guild member-at-large.
- Recipient must submit, in writing, a final report of the project and expenses **by March 1** of the year following receipt of the grant.

GSAQG ETHEL Y. HOWEY GRANT PROGRAM APPLICATION PROCESS

Following the stated time line, submit a typed or hand written application, not to exceed two (2) pages. Include the date, your name, address, phone numbers, email, number of years a GSAQG member, and explain:

1. Why you would like to receive this grant
2. How you will use the grant funds, including a specific budget
3. How you will share your new skills, techniques and information with the membership.

Feel free to provide any additional information that will help the selection committee.

Mail to: Karen Lambdin, Chairperson
GSAQG Foundation Grant Program
9402 Oakwood Garden
San Antonio, TX 78254

Time Line example:

- *1 Aug. 2019 - Application due
- *1 Jan. 2020 - Grant awarded
- *2020 - Grant money used
classes attended
- *Mar. 2021 - Written final
report due
- *Aug. 2021 - Presentation to
review committee
- *Nov. 2021 - Workshop or
presentation to
Guild membership

**Greater San Antonio Quilt Guild
Treasurer's Report
For the four months ending April 30, 2019**

Auction

\$273.72 \$800.00

Community Activities:

Bright Hopes		\$500.00
Storybook Quilts	\$134.97	\$250.00
Community Education	\$22.91	\$150.00
Quilt Angels	\$75.43	\$400.00
ITC		\$25.00

Membership Services & Activities:

Ethel Howey Grant	\$1,000.00	\$1,000.00
Library		\$200.00
QPC		\$275.00
QPFC		\$275.00
Video Library		\$150.00
Programs	\$1,980.49	\$7,000.00
Workshops	\$2,779.25	\$4,500.00

Self-Sustaining Activities:

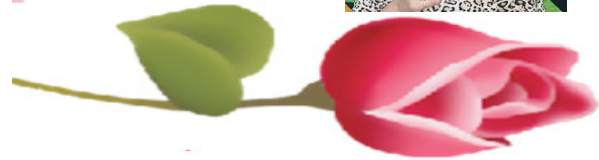
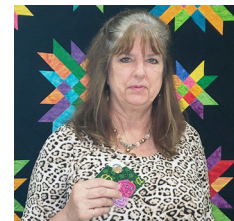
Mini-Retreats	\$409.11	\$1,000.00
Retreat - Summer		\$10,500.00
Retreat - Winter	\$10,049.66	\$8,500.00
Houston Bus Trip		\$3,000.00

Total Expenses \$20,987.24 \$93,486.00

Net \$18,930.80 \$(881.00)

Ending Jefferson Operating	\$26,347.60
[2015 Technology Fund Inc]	\$(1,696.64)
Ending Jefferson Savings	\$3,107.37
SSFCU CD's & Savings	\$31,640.87
SSFCU Wright Class CD	\$11,959.71
Total Guild Funds	\$71,358.91

Karen Nanos, Treasurer



Calico Rosebuds

Donna Anderson; Ida Kujawski; Jean Hardies, Jeanette Jay, Suellis Moore, Sandra Lowell, & Dea Jae Shore.

	YTD Actual	2019 Proposed Budget
REVENUES		
Ordinary Income:		
Interest	\$1.54	\$400.00
Savings		
CD Interest		
Other income	\$10.00	
Garage Sale	\$148.00	
Magazine Sales	\$6.00	\$250.00
Nametag Fines	\$6.75	\$30.00
Newsletter Postage		
Dues - Membership	\$4,197.00	\$5,500.00
Newsletter / Directory Ads	\$775.00	\$1,400.00
Workshops	\$997.00	\$3,000.00
Fund Raising:		
Quilt Show	\$14,476.75	\$59,025.00
Auction		
Self-Sustaining:		
Retreat - Summer	\$9,490.00	\$10,500.00
Retreat - Winter	\$9,810.00	\$8,500.00
Mini-Retreats		\$1,000.00
Houston Bus Trip		\$3,000.00
Total Revenues	\$39,918.04	\$92,605.00
EXPENSES		
Administration:		
Administration	\$115.33	\$500.00
Bank & CC	\$77.33	\$800.00
Insurance	\$(1,075.22)	\$3,100.00
Office Supplies & Postage	\$102.57	\$500.00
CPA / Tax Return		\$600.00
Permanent Quilt collection		\$25.00
Door Prizes		\$100.00
Telephone	\$20.10	\$150.00
Storage facility	\$1,567.00	\$4,176.00
Rent (Meetings)	\$1,060.00	\$3,000.00
Rent (Workshops)	\$550.00	\$500.00
Membership expenses:		
Membership Supplies		\$100.00
Newsletter / Directory Printing	\$255.00	\$300.00
Postage		\$100.00
Webpage	\$519.55	\$400.00
Quilt Show	\$1,070.04	\$40,610.00



Reanna Lily Designs

quilting company
jen eskridge

designer | author | instructor
longarm quilting services

reannalilydesigns.com
reannalilydesigns@gmail.com
316-651-7313



Dwanna Martinez
Longarm Quilting Services

804-621-3682
dwannamartinez@gmail.com
San Antonio, Texas



Memories by the Yard
8015 Mainland
San Antonio, Tx. 78250
(210) 520-4833
www.memoriesbytheyard.com
sales@memoriesbytheyard.com



BUSY FINGERS WORKSHOP

JEANNETTE JAY
DESIGNER / QUILTER / BAGINEER

SAN ANTONIO, TEXAS
210-219-8880
busyfingerssa@sbcglobal.net


pinterest.com/mamajay55
instagram.com/mamajay55
etsy.com/shop/busyfingersworkshop
1st Friday Art Walk - 1011 S. Alamo (weather permitting)



Appliqué
elementz.

Laser-Cut Fusible Fabric Appliqué

To Apply:
Just peel, place
and press
with an iron




www.urbanelementz.com
www.appliqueelementz.com
830.964.6133

Greater San Antonio Quilt Guild, Inc
P.O. Box 380522
San Antonio, TX 78268

RETURN SERVICE REQUESTED

March Schedule

June 3 Board Meeting 3:00 PM
@ Igo Branch Library

June 8 Guild Meeting 10:00 AM
@ St. Francis Episcopal Church

Check out the calendar on our web page for Bee meetings and other Guild related events.

ANNUAL MEMBERSHIP INFORMATION

REGULAR DUES \$ 24
SENIOR (65+) \$ 18
YOUTH (6-18) \$ 6

Send your check to:
GSAQG
PO Box 380522
San Antonio, TX 78268

Board of Directors

President	Mary McCarthy
President Pro Tem	DeaJea Shore
1st Vice President for Special Events	Elaine Staller
2nd Vice President for Information	Ina Ramirez
3rd Vice President for Programs	Janet Miller
4th Vice President for Services	Leti Zavala
5th Vice President for Community Outreach	Gail Clover
Secretary	Janice Schwab
Treasurer	Karen Nanos
Parliamentarian	Sylvia Jolet
Term expires December 2019	